



®
701 GULLO AVENUE
ELK GROVE, IL 60007
Phone 847-640-7002
Fax 847-640-7008
sales@triteqlock.com

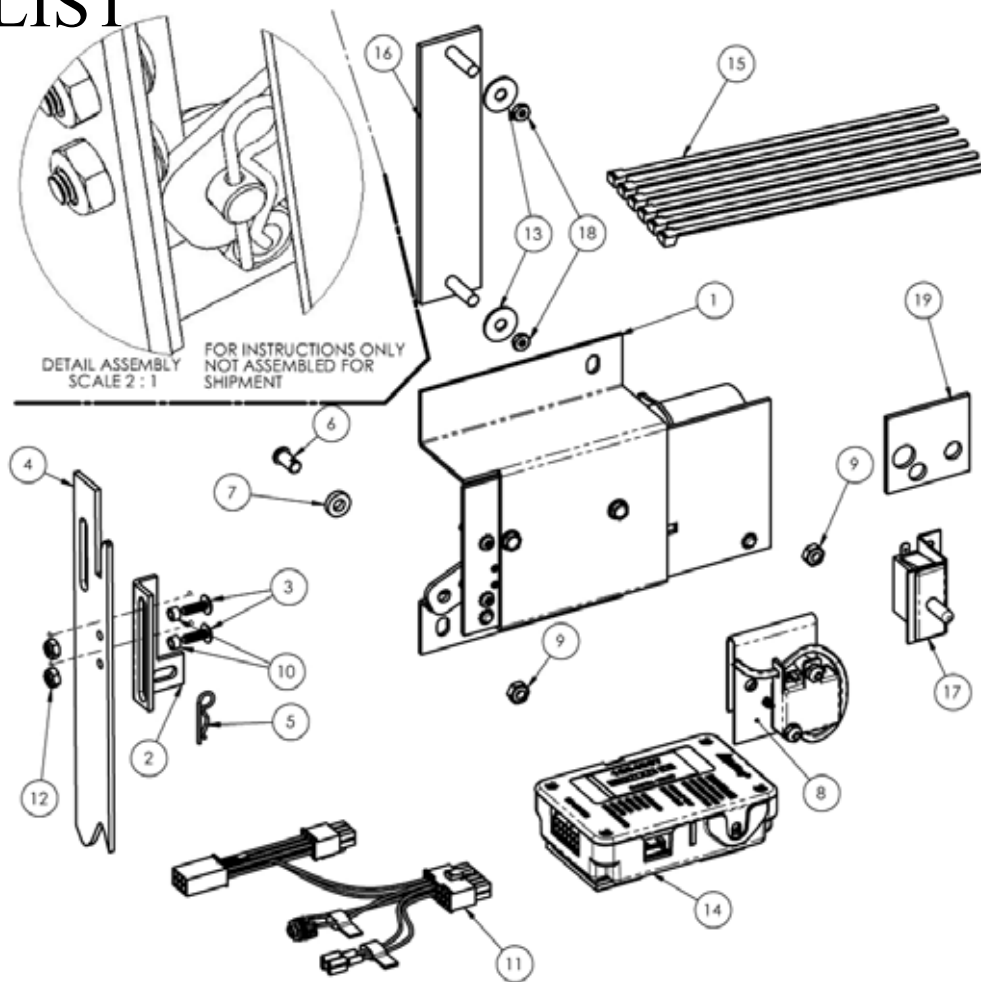
Crane Model 431D

Revised 9-24-07

Lock kit Installation instructions



PARTS LIST



ITEM NO.	DESCRIPTION	QTY.
1	LOCK ASSEMBLY	1
2	LIFT BAR BRACKET	1
3	8-32 X 1/2 TRUSS HEAD SCREW	2
4	VENDOR LIFT BAR	1
5	HAIR PIN COTTER	1
6	1/4 X 23/64 CLEVIS PIN	1
7	SPACER, .5 X .25 X .12	1
8	IR RECIEVER ASSEMBLY	1
9	NUT 10-32 KEPS	2
10	SCREW SPACER	2
11	HARNESS	1
12	LOCK NUT 8-32	2
13	1/4" FLAT WASHER	2
14	CPU	1
15	TIE-RAP	6
16	T HANDLE BLOCKER	1
17	SWITCH BRACKET ASSEMBLY	1
18	#6 - 32 KEPS NUT	2
19	DRILL TEMPLATE CHANGE CUP	1

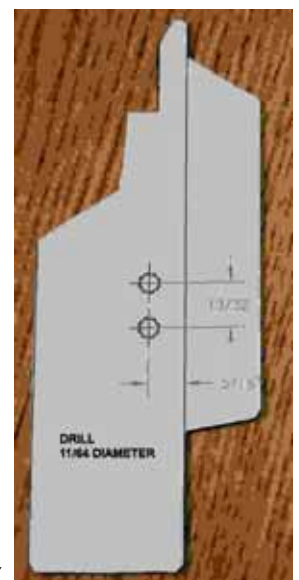
Step 1 Remove T-handle and hardware (both openings in cabinet)



Step 2 Install T-handle blocker [Item 16] using (2) no.10 flat washers [Item 13] and (2) #10-32 nuts [Item 18]. Do not over tighten nuts. Over tightening the nuts may deform the T-handle blocker.

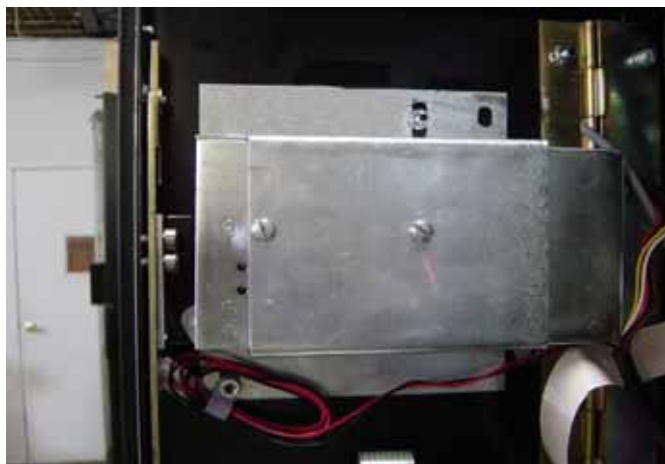
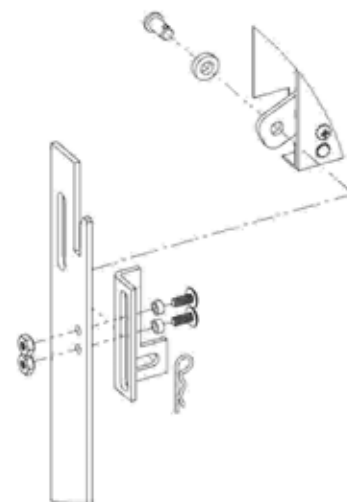


Step 3 Locate the magnetic drill marking template and position on lift bar [Item 4] (lift bar is part of the vendor, not part of the kit). Using a 3/8" transfer punch, mark the 2 holes on the lift bar as indicated on the drill marking template. Drill the holes using a 11/64 diameter drill. IMPORTANT: Do not drill through the drill marking template. Remove after marking but before drilling.



Step 4 Fasten lift bar bracket [Item 2] to the lift bar [Item 4] using (2) #8-32 screws [Item 3], (2) bushings [Item 10], and (2) self locking hex nuts [Item 12]. Tighten securely.

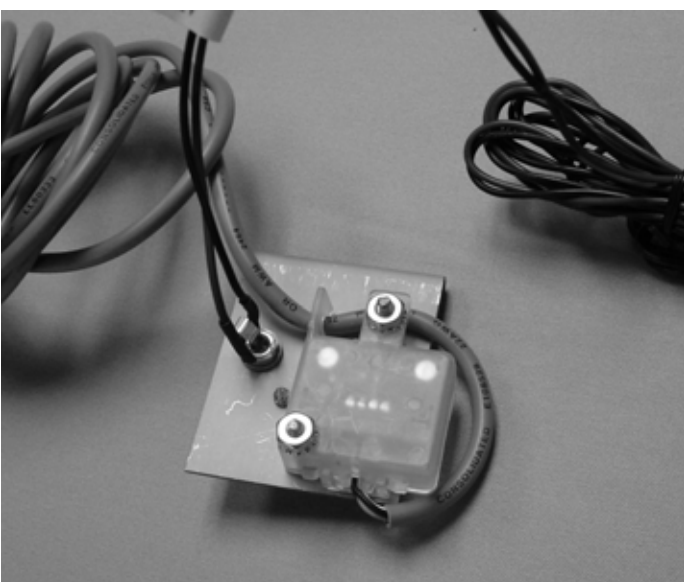
Step 5 Install spacer [Item 7] onto clevis pin [item 6] then install through the hole in the lock arm [Item 1], and secure with the hairpin cotter pin [Item 5]. (See detail assembly shown on the parts list page.



Step 6 Install lock assembly from step 5 onto the vendor door existing studs and secure in place using (2) #10-32 nuts [Item 9]. Tighten securely.

Step 7 Attach the self adhesive drill template [Item 19] to the back of the coin return cup.

Drill (2) 3/8" holes and (1) 1/2" hole. It is not necessary to remove the template after drilling.



Step 8 Locate the harness [Item 11] and the IR receiver assembly [Item 8]. Install the battery jack from the harness into the IR receiver assembly as shown. Tighten the nut holding the jack in place securely.

Step 9 Remove the sheet metal screw from the front of the IR receiver assembly from step 8 and slide the IR receiver assembly with battery jack onto the back wall of the coin return cup. Reinstall the sheet metal screw from inside the coin return cup and tighten securely.



Step 10 Install CPU [Item 14] directly below main circuit board. Note orientation of the CPU box before fastening with hook and loop fasteners.

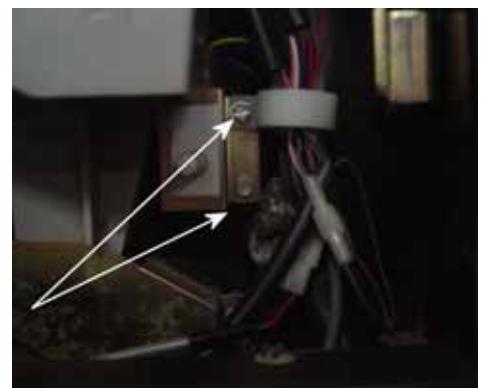
Step 11 Install wiring harness [Item 11] by plugging into CPU first and routing the wiring as needed. Do not connect the two fast on connectors that are part of the new wiring harness at this time.

Route the end of the wire with the two connectors to the changer mechanism. Unplug the changer mechanism (it's a 6 conductor plug) and plug both end into the lock harness.

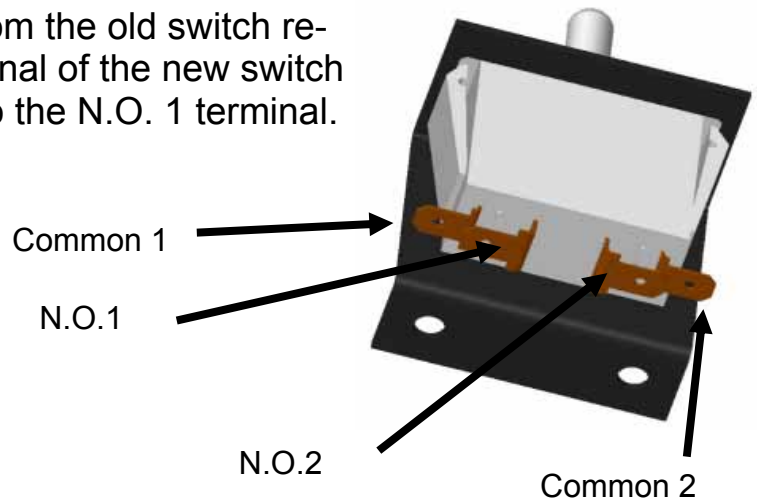
Use care when routing wires to prevent pinching or cutting of the wires from moving parts. Carefully route any wire that must go from the door into the cabinet to prevent pinching or breaking of the wires. Fasten wires out of the way using plastic wire ties as needed.

Step 12 Remove (2) screws holding the existing door switch and bracket.

RETAIN ALL SCREWS. Remove switch and bracket assembly and carefully disconnect wires from the switch. Note, this switch and bracket will not be re-used.



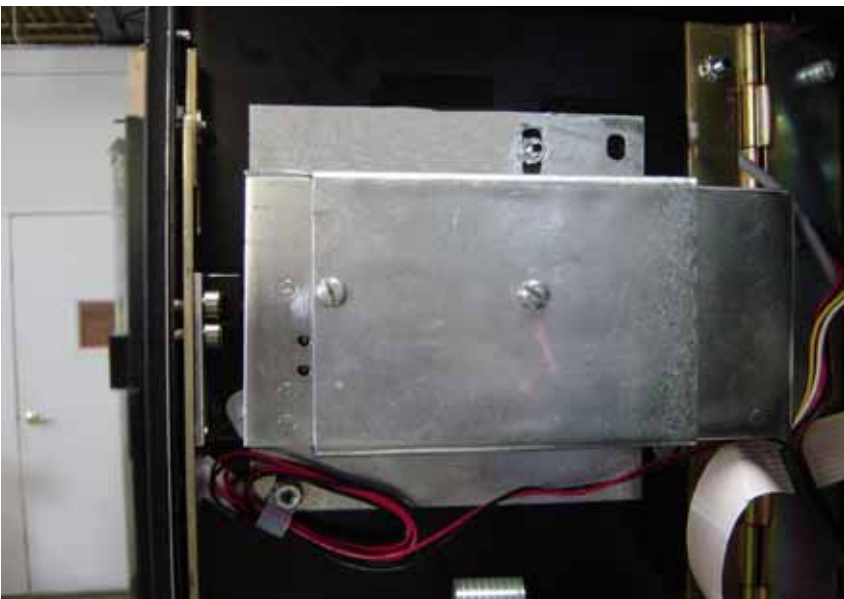
Step 13 Connect either of the 2 wires from the old switch removed in step 12 to the common 1 terminal of the new switch [Item 17] and connect the second wire to the N.O. 1 terminal.



Step 14 Connect either of the two remaining wires with the fast on connectors from the wire harness from step 11 to the common 2 terminal of the new switch. Connect the other wire to the N.O. 2 terminal.

Step 15 Install new switch/bracket assembly into the vendor in the same place the old switch/bracket was located using the same screws removed earlier.

Finished installation of lock



Step 16 Testing of the lock

IMPORTANT— do not close the door until lock installation is thoroughly tested.

Plug vendor into appropriate power source and turn on.

The lock is manufactured with a universal key code P1 programmed into the lock and the P1 code must be replaced with the end users zone and route keys . Do not lock the lock until the zone and route keys are installed (see programming of keys).

Press the switch from step 14 to initiate the lock closing.

Point either of the keys just programmed into the lock at the sensor (see step 9) and press the key button. Lock will open, moving the lift bar to the unlocked position.

Make sure the lift bar is moving freely and through the entire range of motion

Lock the vendor a second time and unlock with the other key.

Repeat lock and unlock with each key a minimum of 2 times before closing the door for the first time.

After the door is closed and locked, check door tightness. If the door is too loose, unlock the vendor and adjust the lift bar hooks. Caution, if the lift bar hooks are too tight, the lock may bind and not fully lock the vendor.

Programming the lock with new keys

To program the lock to your key code, depress and hold the programming switch on the side of the CPU until the LED turns solid on (see arrow in photo). Release the switch. Point the key fob to be programmed into the lock at the receiver and press the key fob button. The LED in the CPU will change from glowing bright to blinking. When the blinking stops, the new key is programmed into the lock.

Repeat for the second key.

