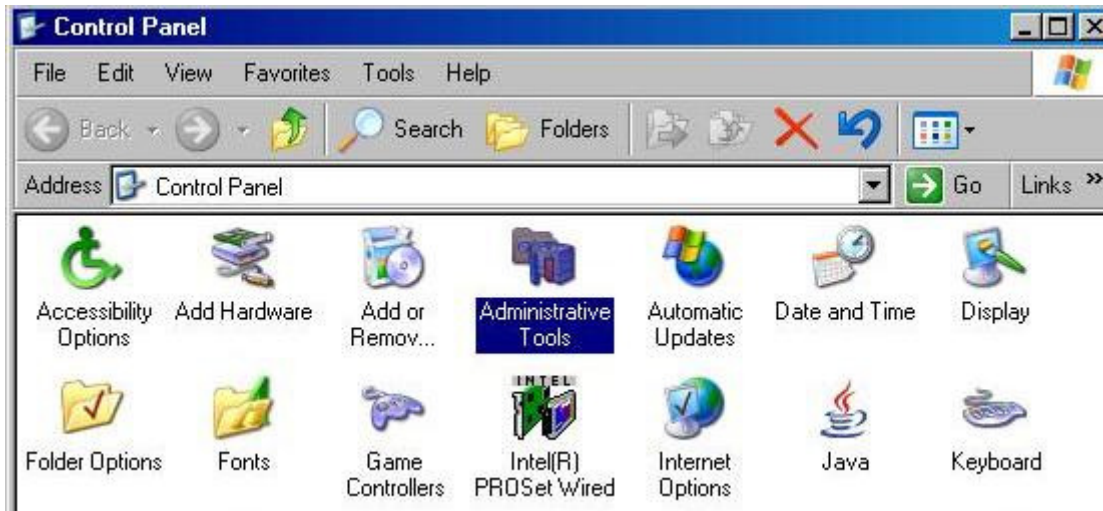
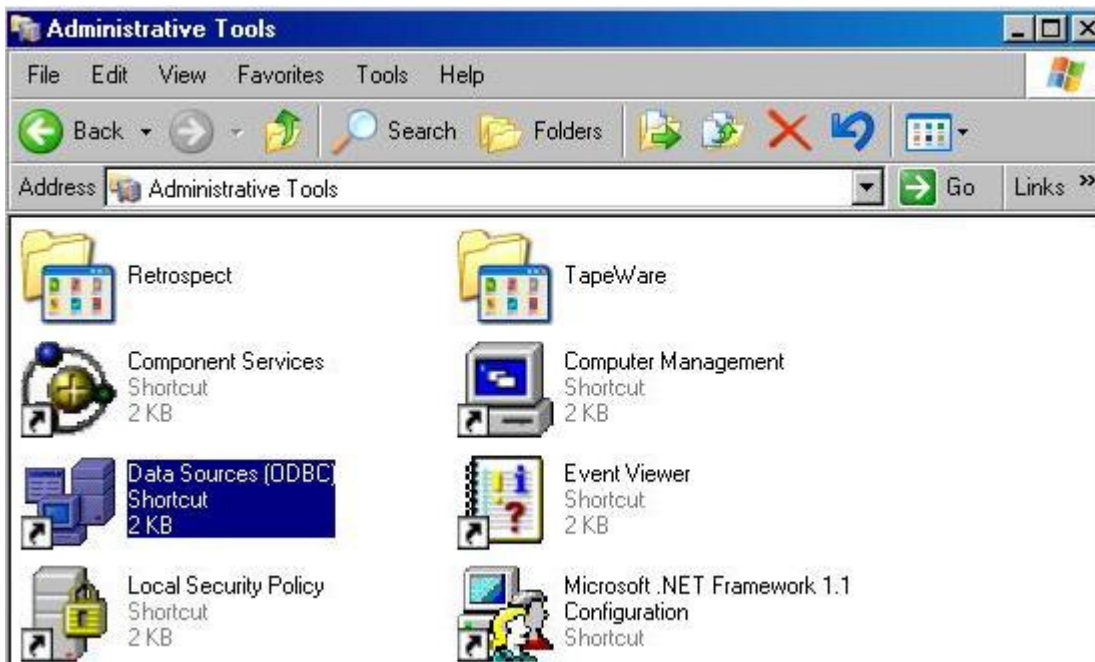


Using Windows-Data Sources (ODBC) to Verify Connection to SQL Server

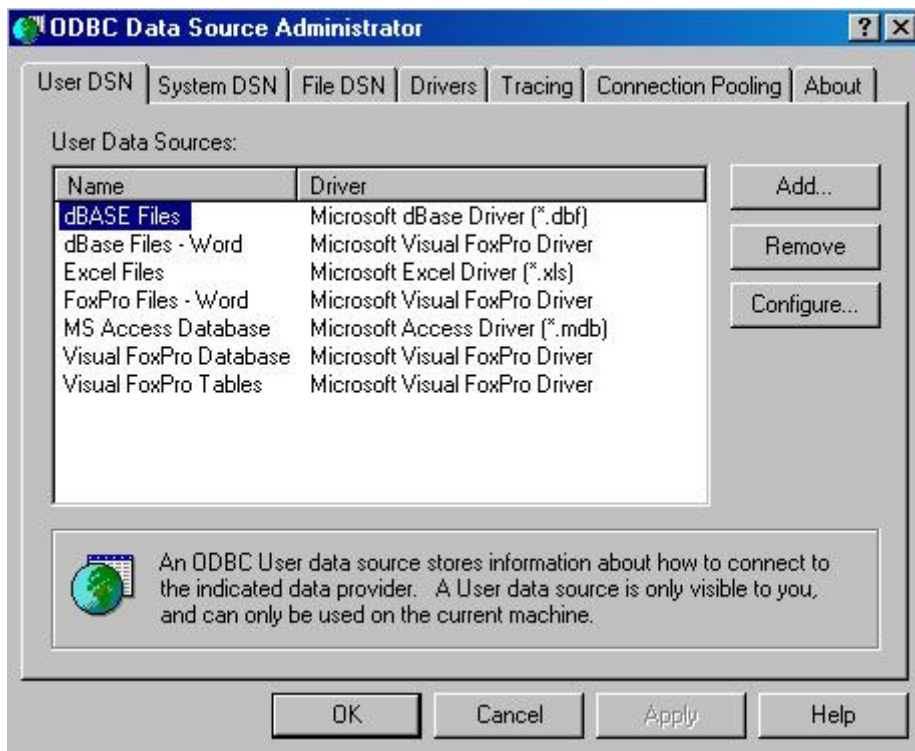
1. From the station that needs to verify connection to SQL database, Open control panel.



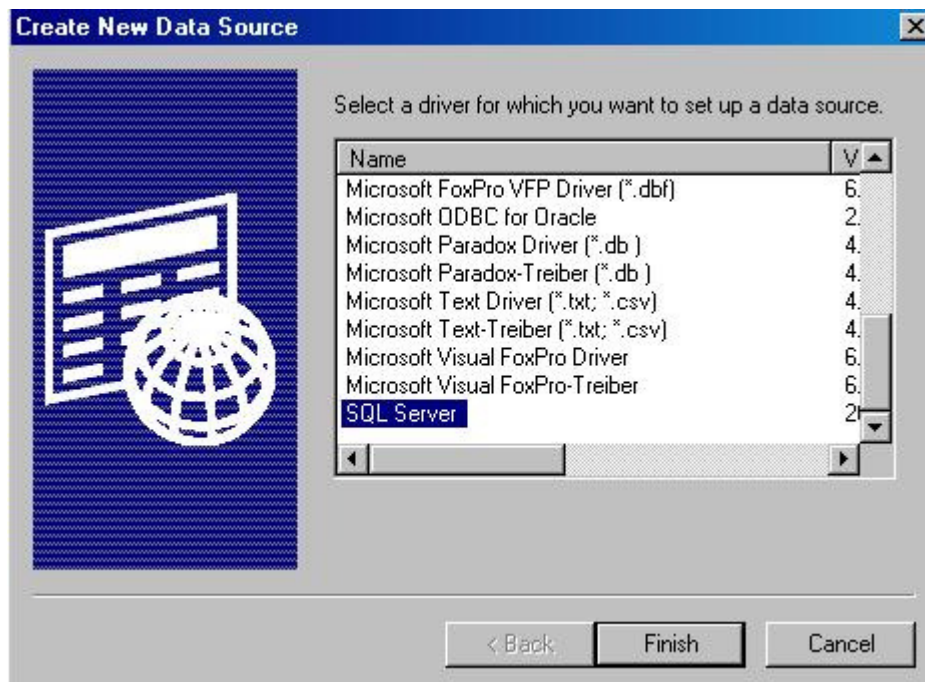
2. Open Administrative tools.



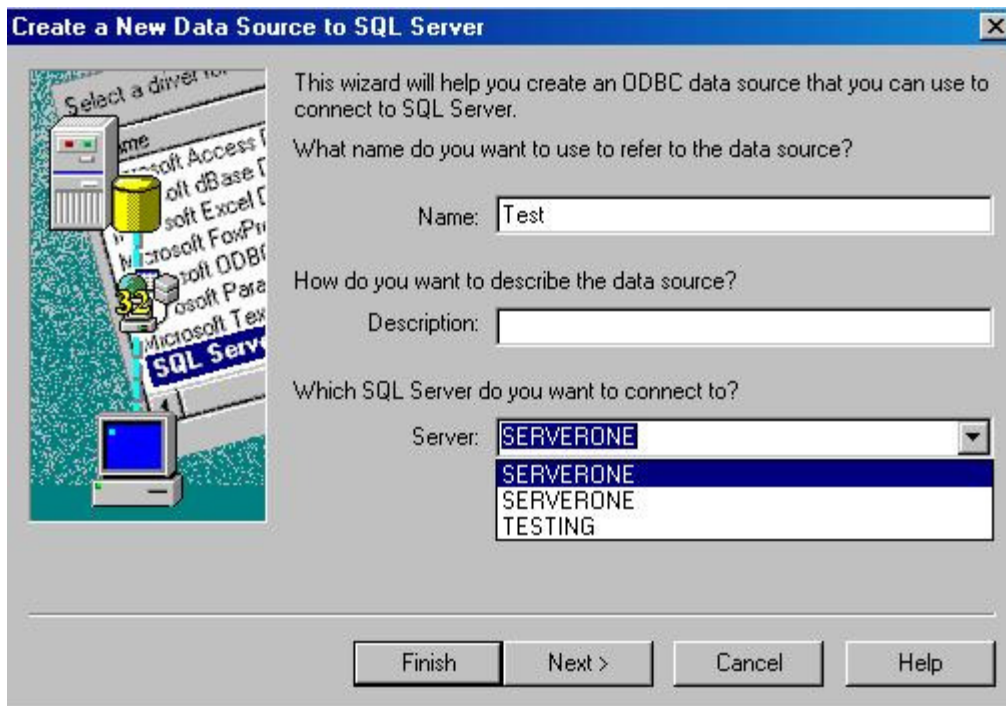
3. Open "Data Sources (ODBC)"



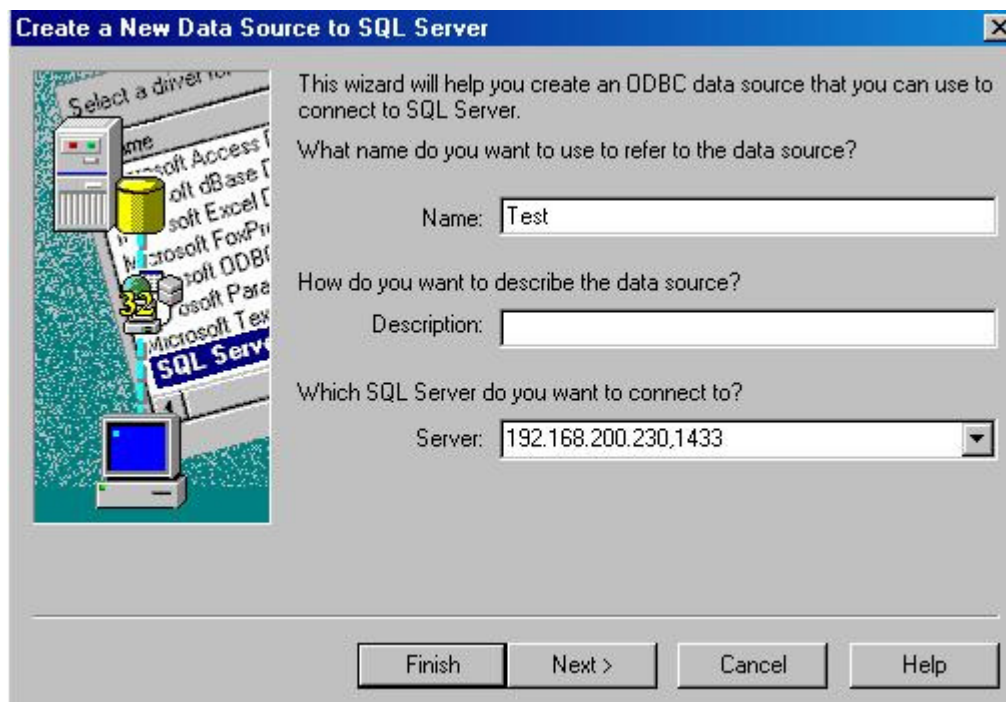
4. From "User DSN" tab click on "Add" button.



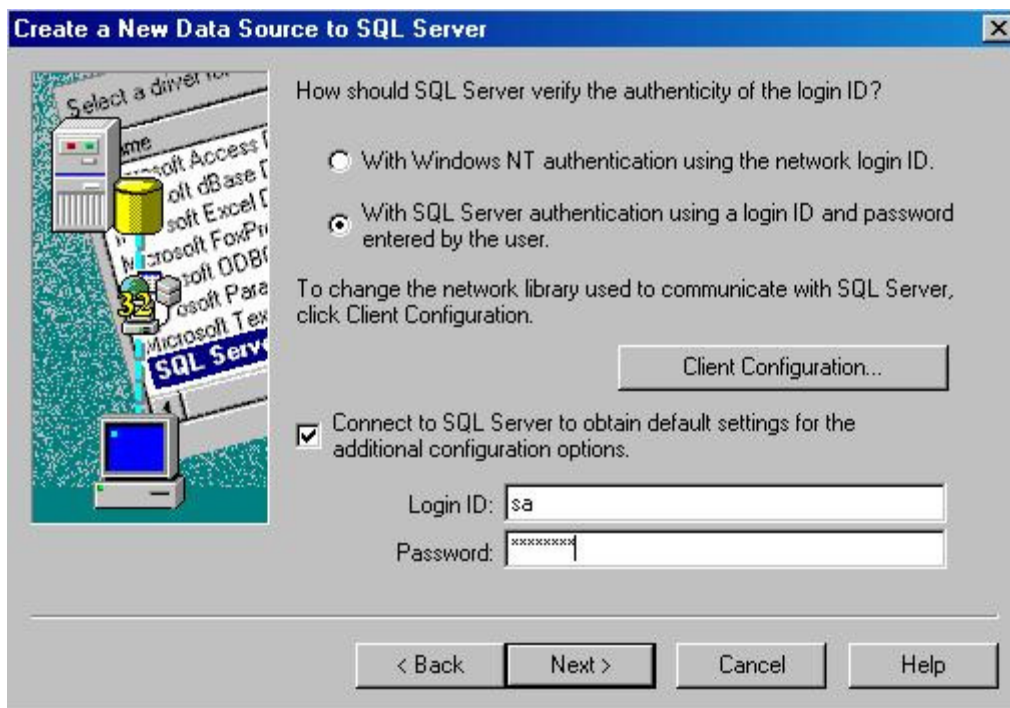
5. Browse down the driver list and select "SQL Server" and click on "Finish".



6A. If the station is in the same local network as the SQL server, type in a name for the data source and select the SQL Server from the drop down list at the bottom of the window.



6B. If the station will access the SQL server from outside the local network type in the address and the port.
Click on Next when done.

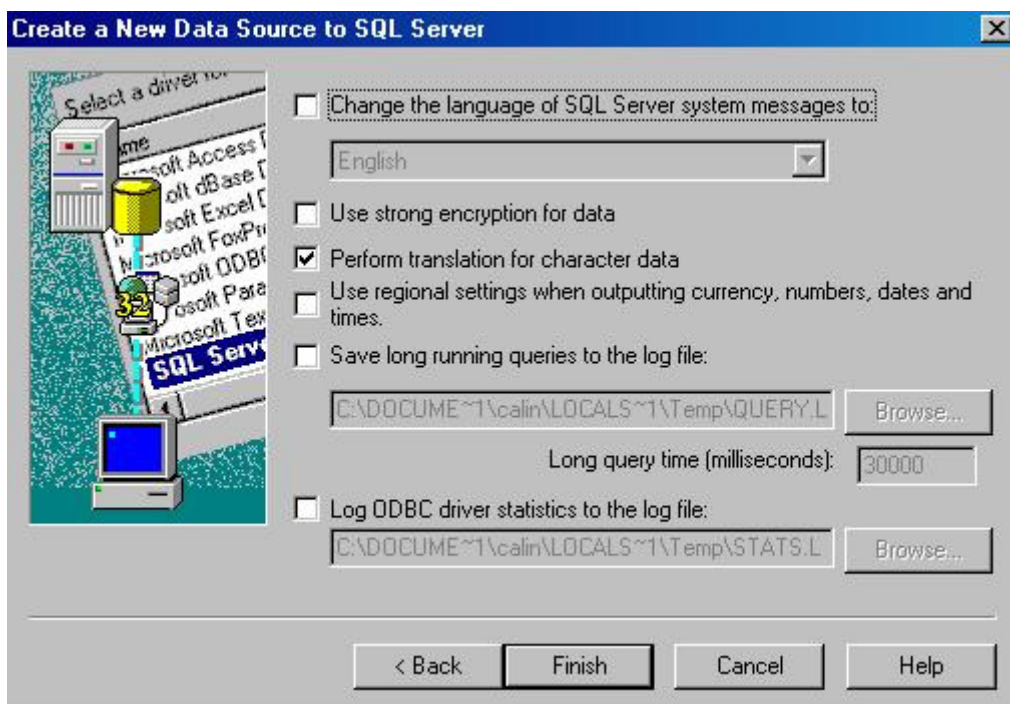


7. Select “With SQL Server authentication.....”, and enter the SQL administrator login and password. Click on Next when done. For databases created with TTAdmin 2.1 or above the following user can be used to verify connection without using the SQL administrator account:

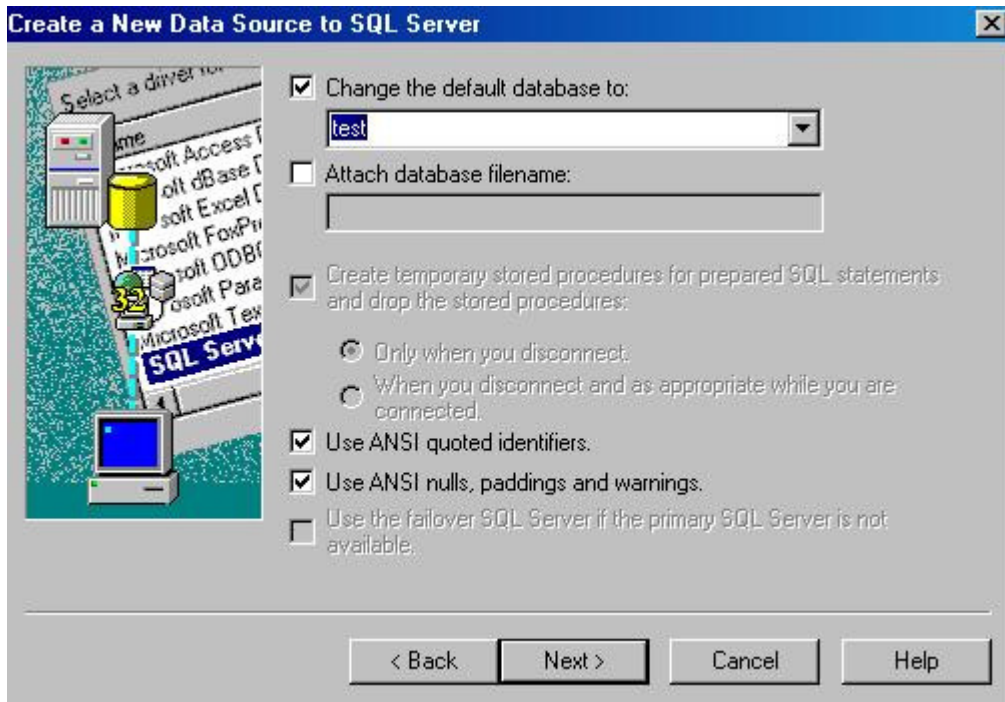
Login ID: TTestUser

Password: TTest

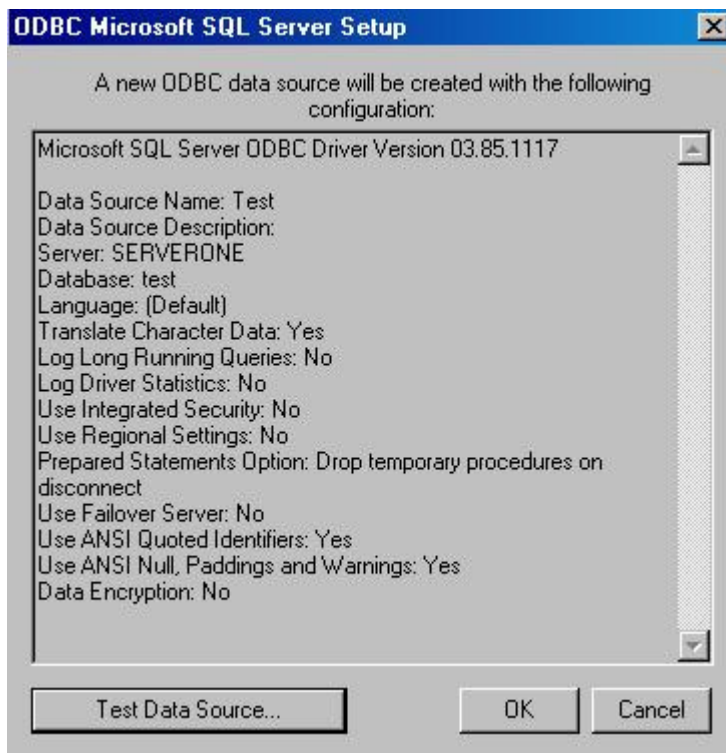
Note: Login ID and password are case sensitive



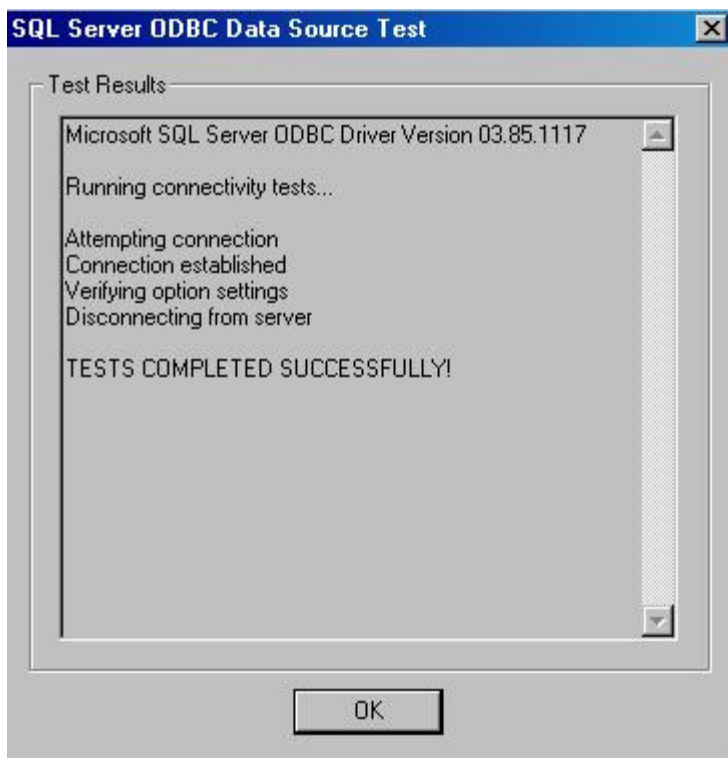
8. Accept default settings as in above screen as click on Finish.



9. If TriTeq Database not yet attached, select any of the databases currently attached to your SQL.



10. On configuration screen click on "Test Data Source....".



11. If the test does not complete successfully as in above capture, contact your IT to solve the connectivity error.